

O SUCESSO DO AÇO GALVANIZADO NAS GRANDES OBRAS DE ARQUITETURA NA UNIÃO EUROPEIA

Murray Cook
Executive Director
European General Galvanizers Association

www.egga.com

www.intergalva.com

EGGA

EGGA: The Federation of National Associations in Europe

AUSTRIA

Fachverband der Eisen-und
Metallwarenindustrie Österreichs

BELGIUM, NETHERLANDS & LUXEMBOURG

Zink Info Benelux

BULGARIA

Bulgarian Galvanizing Association

CZECH & SLOVAK REPUBLICS

Czech and Slovak Galvanizers Association

FRANCE

Galvazinc Association

GERMANY

Industrieverband Feuerverzinken eV

GREECE

Greek Galvanizers Association

HUNGARY

Magyar Tüzhorganyzók Szövetsége

ITALY

Associazione Italiana Zincatura

NORDIC COUNTRIES

Nordic Galvanizers

ROMANIA

ANAZ

SPAIN

Asociación Técnica Española de Galvanización

SWITZERLAND

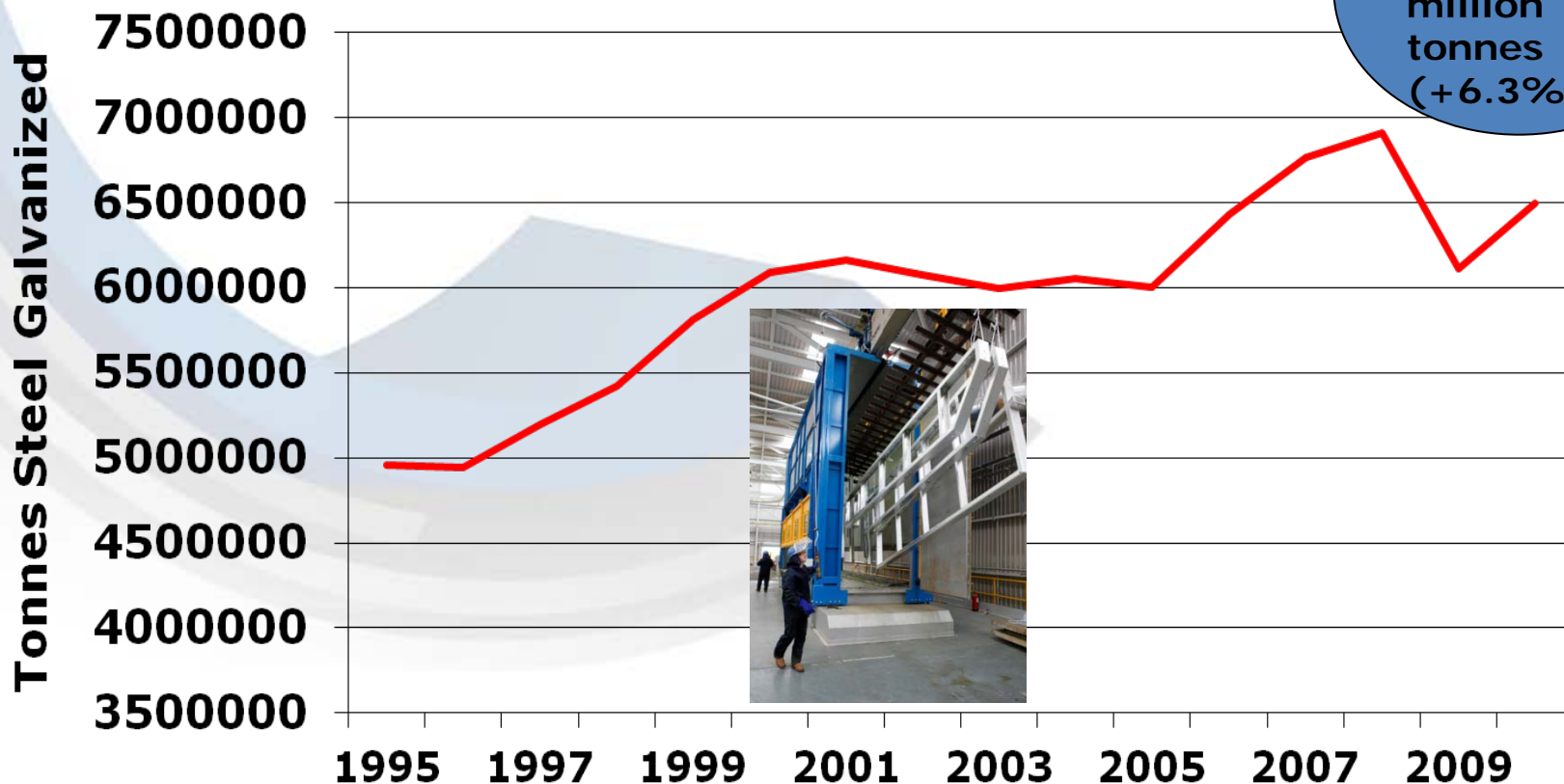
Vereinigung Schweizerischer Verzinken

UK & IRELAND

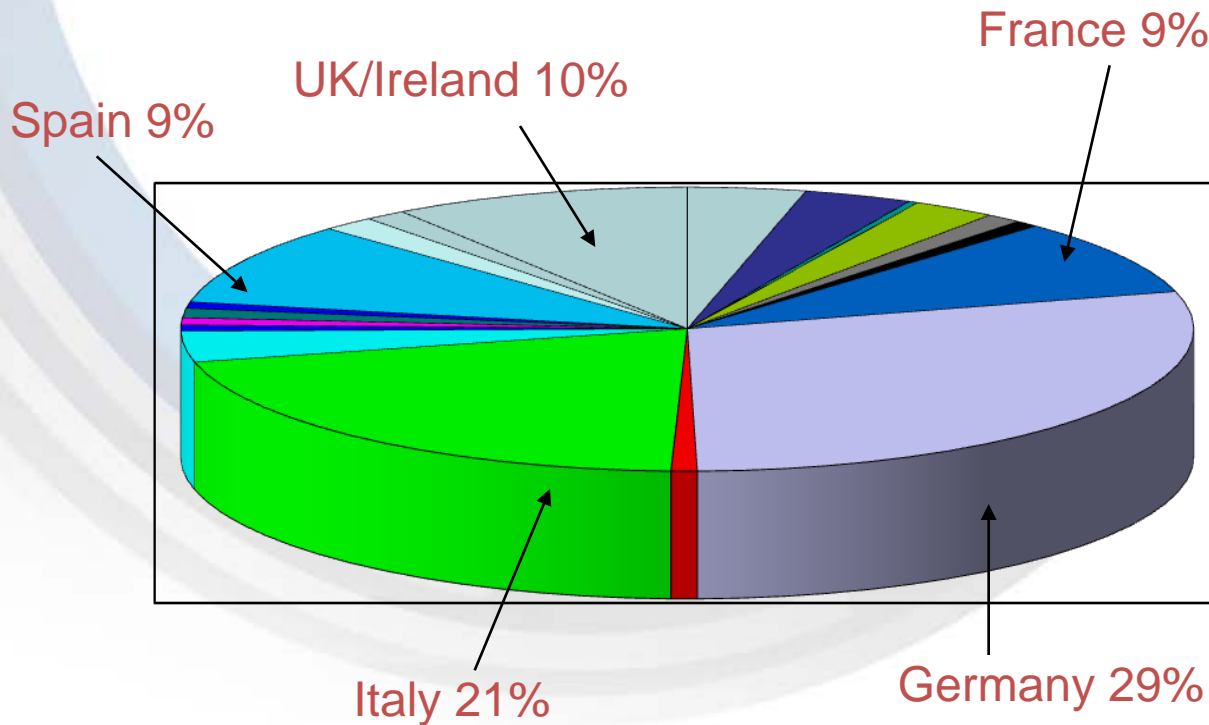
Galvanizers Association



General Galvanizing in Europe (1995 – 2010)

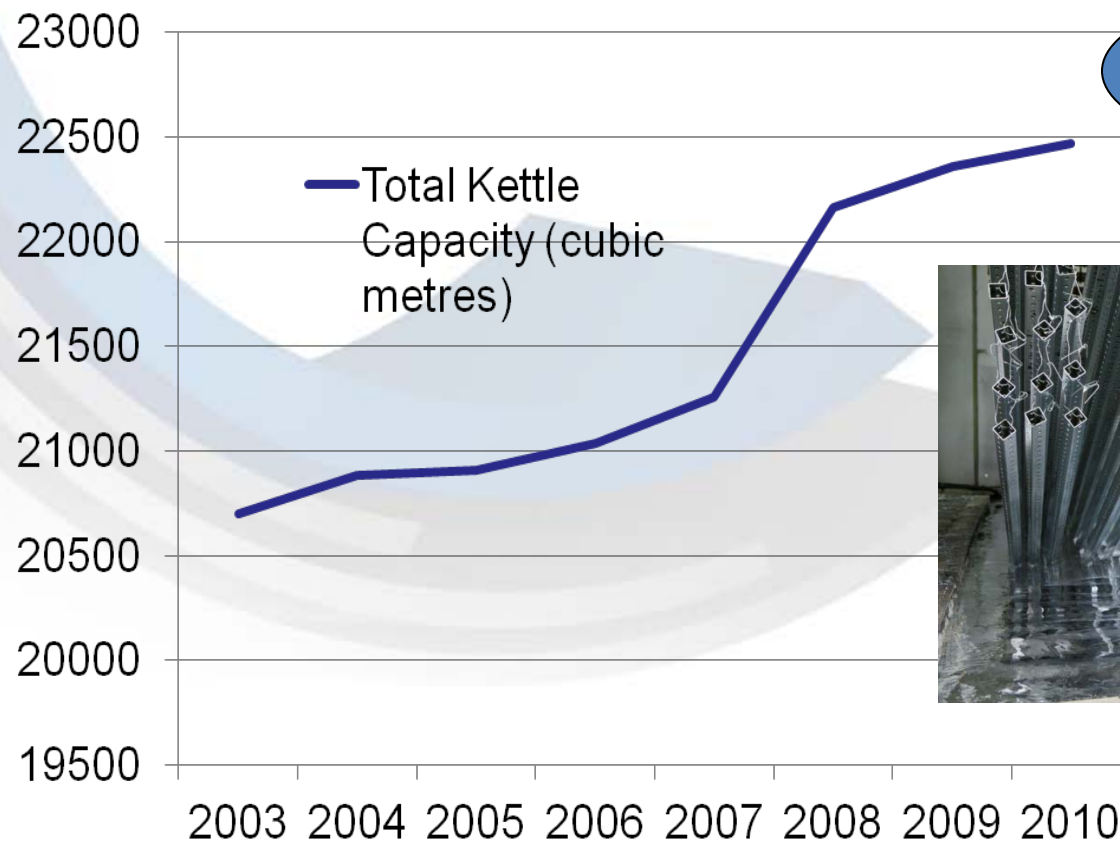


National Share of European Production (2010)

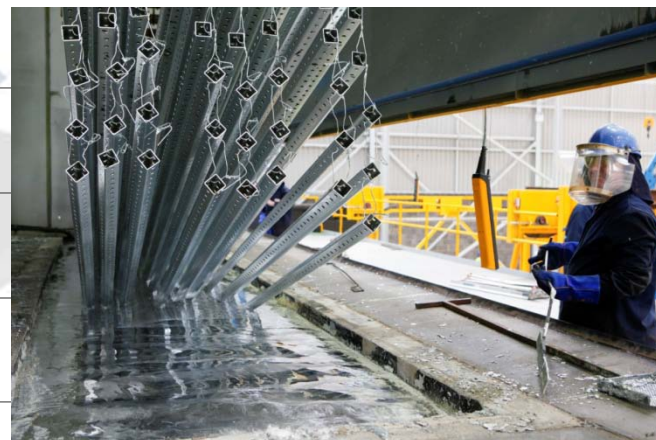


- Austria
- Belgium
- Bulgaria
- Czech Rep
- Denmark
- Finland
- France
- Germany
- Hungary
- Iceland
- Italy
- Netherlands
- Norway
- Portugal
- Romania
- Slovakia
- Spain
- Sweden
- Switzerland
- UK/Ireland

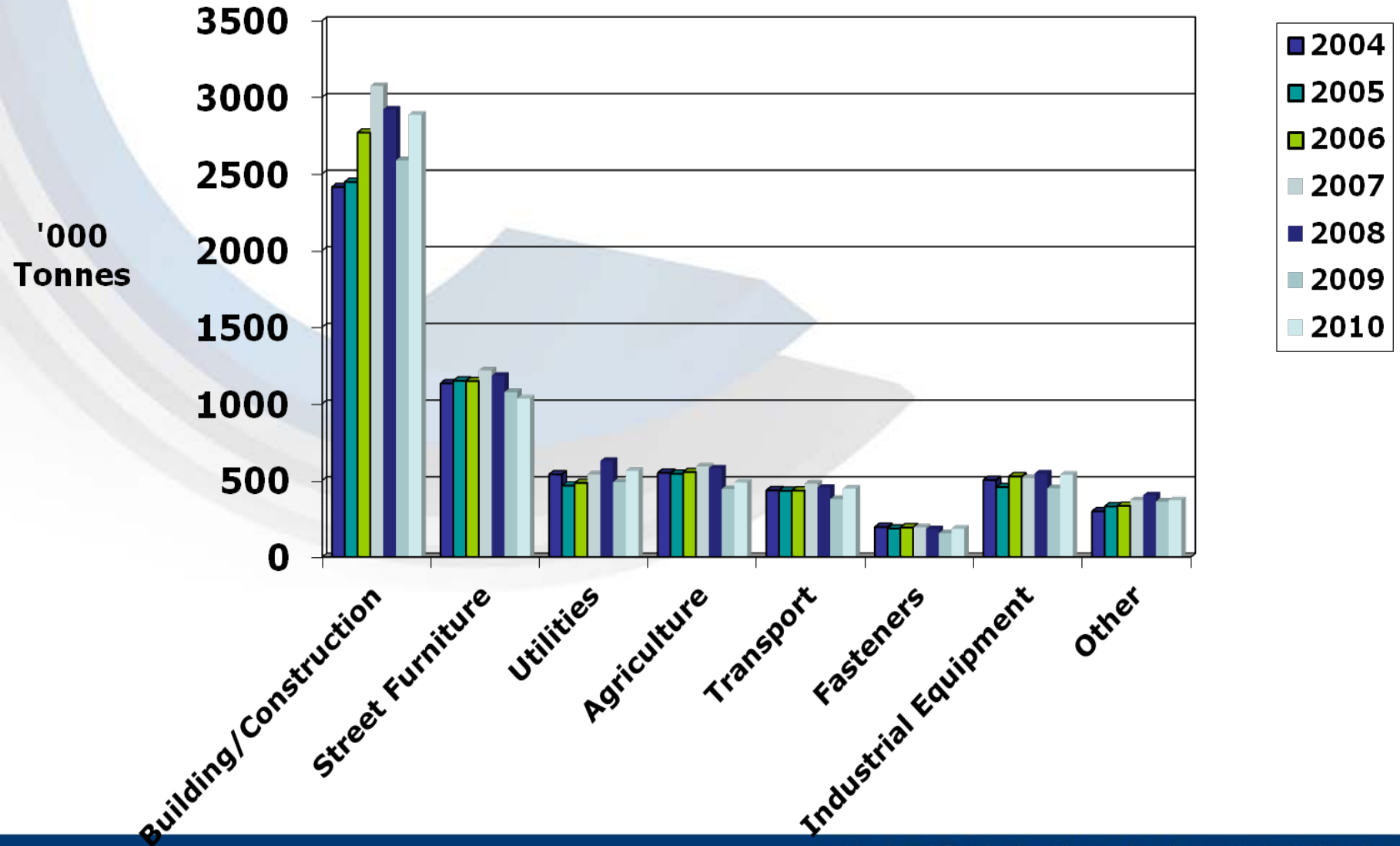
Kettle Capacity



22,466 cubic metres



Market Segmentation (2004-2010)



Construction & Street Furniture - the most important segments

Market Segment	% of EU total (2010)
Construction	44
Street Furniture	16
Utilities	8
Agriculture	8
Transport	7
Fasteners	3
Industrial Equipment	7
Other	5



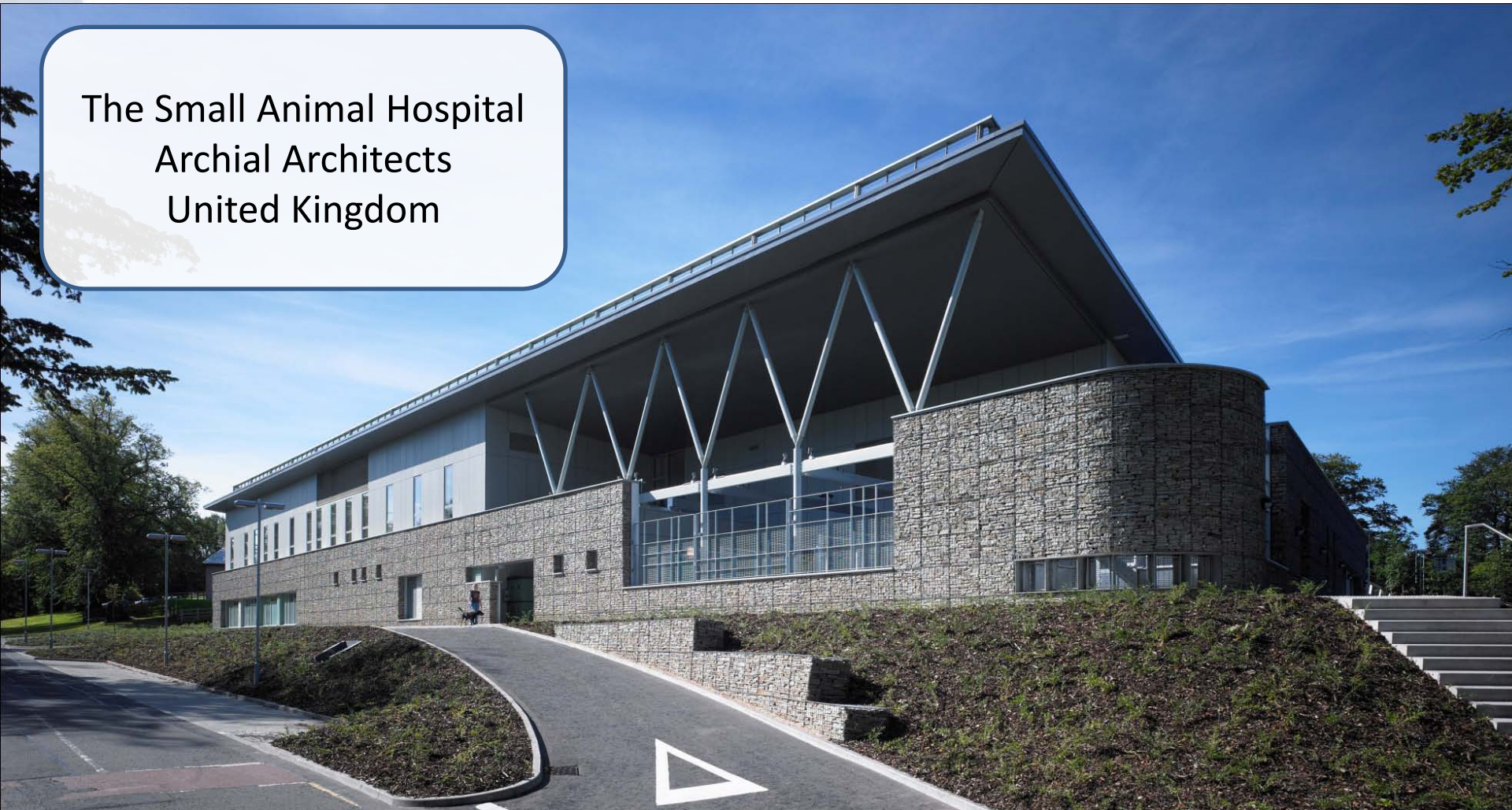
INDUSTRIAL BUILDINGS



Fisherman's Wharf
Warehouses, Pontevedra,
Spain



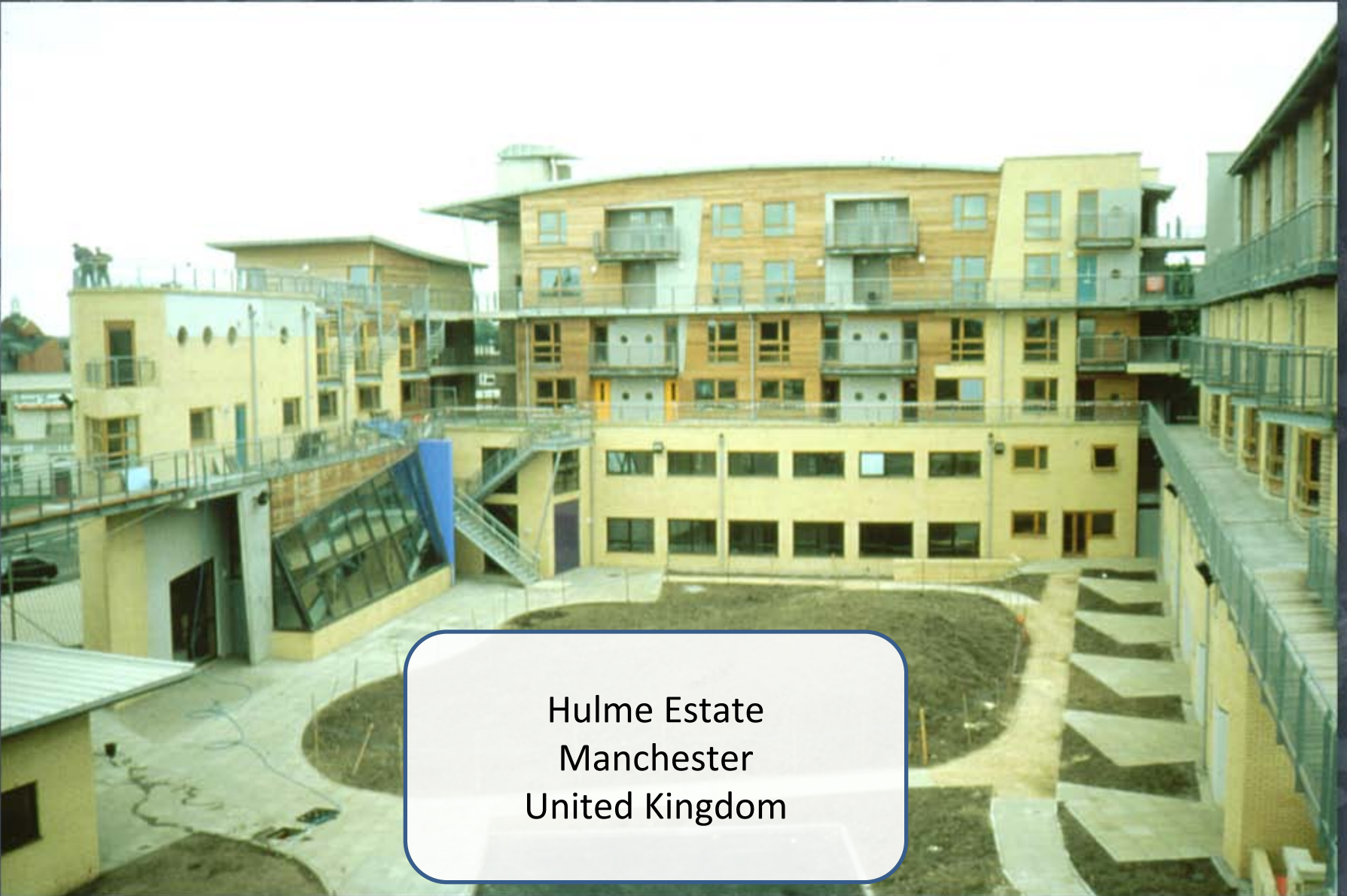
The Small Animal Hospital
Archial Architects
United Kingdom







RESIDENTIAL BUILDINGS



Hulme Estate
Manchester
United Kingdom



Hagibor Social Care Facility,
Prague
Czech Republic

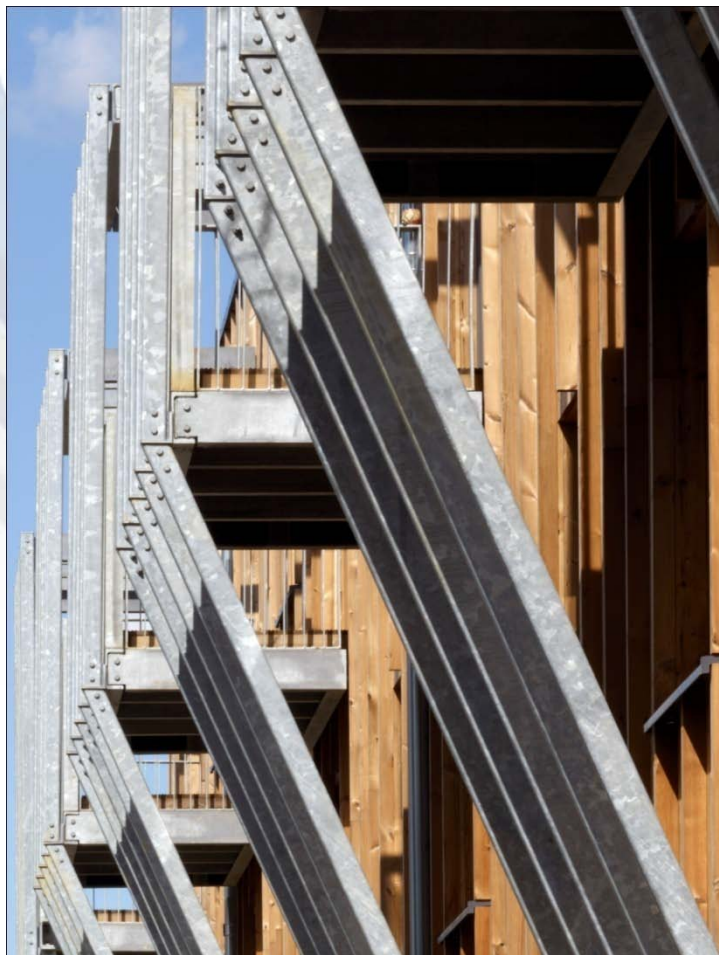








Heron Court
Bell Phillips Architects
United Kingdom



VM Housing, Copenhagen,
Denmark



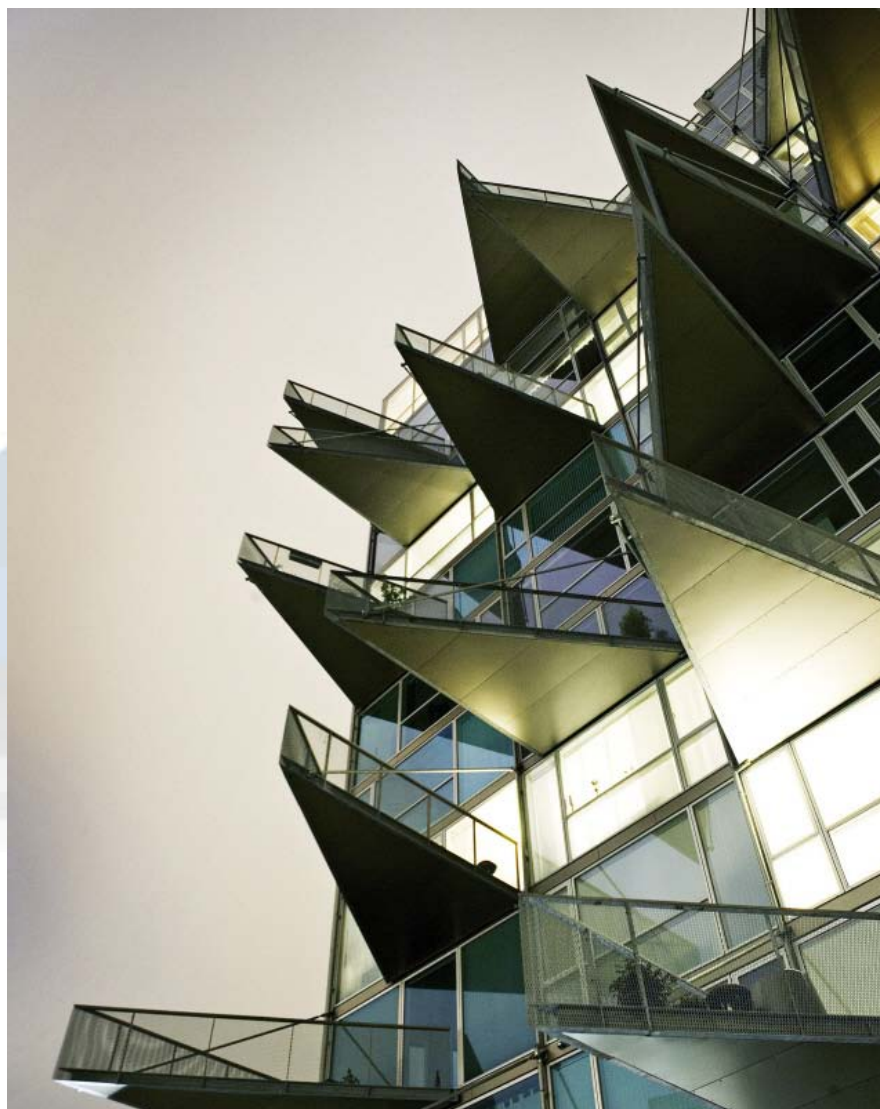




Congresso Brasileiro de Galvanização

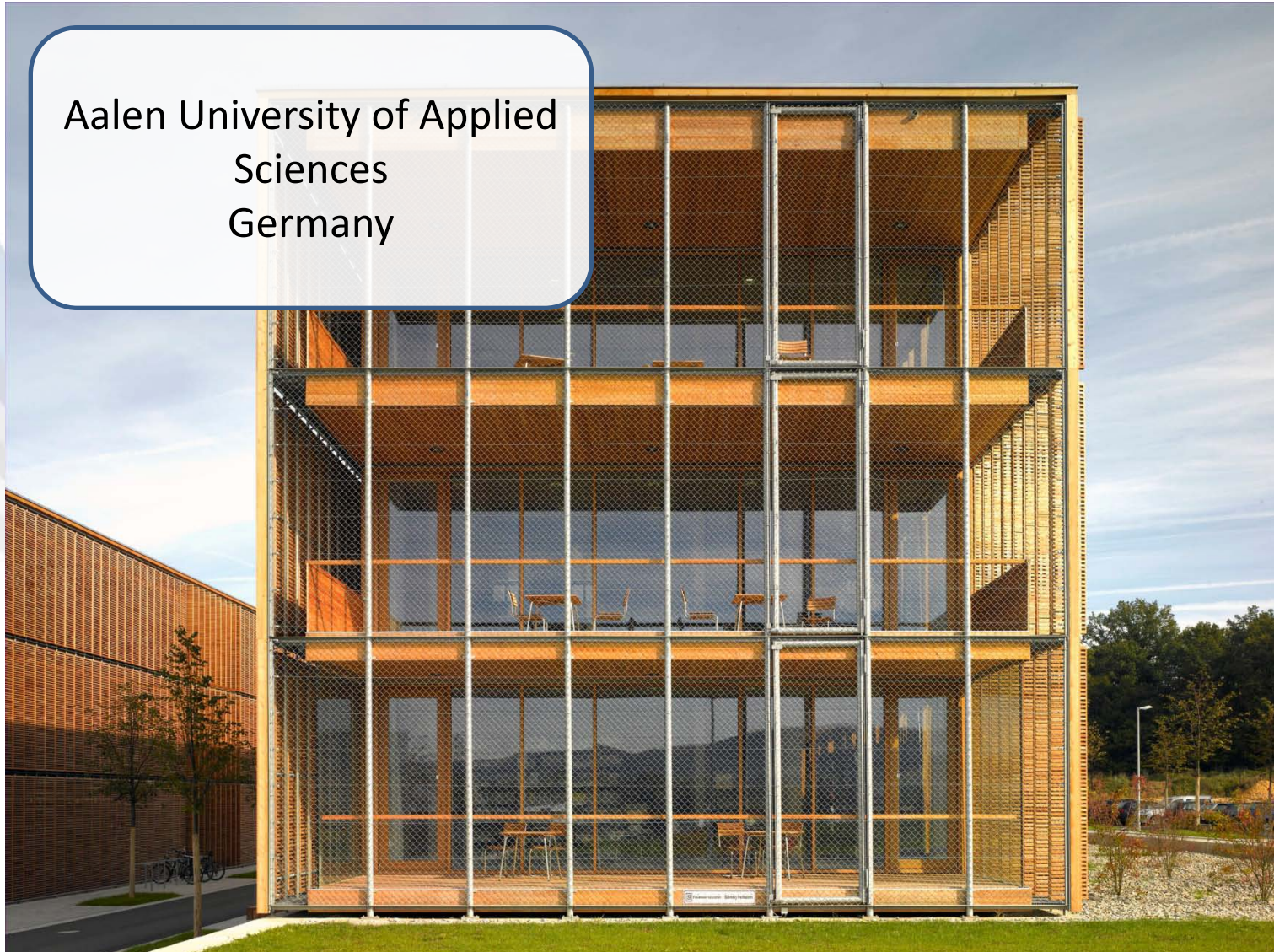
GALVA BRASIL
2011

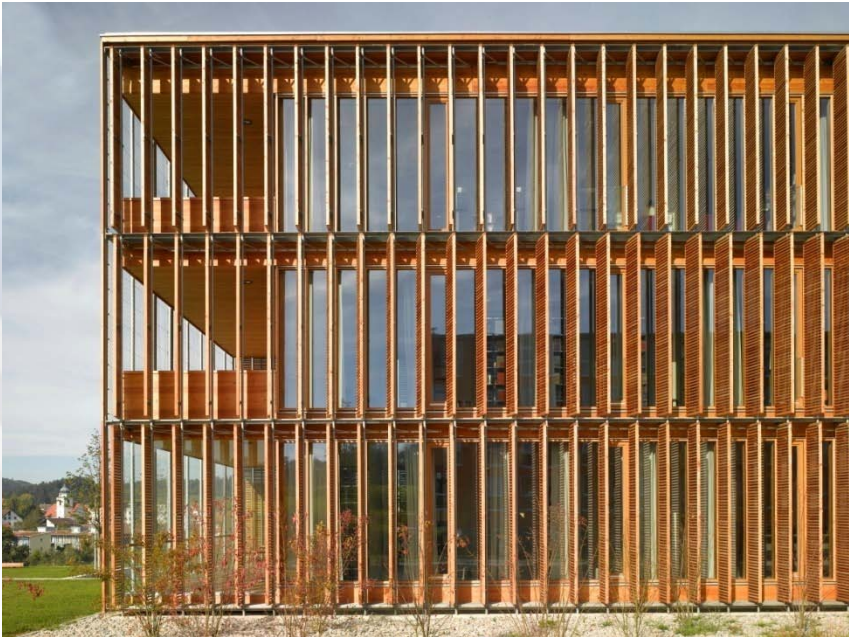
REALIZAÇÃO



EDUCATIONAL BUILDINGS

Aalen University of Applied
Sciences
Germany





Werner von Siemens
School
Bochum, Germany







Covered Play Area
Anglo-Spanish School
London
United Kingdom





School Gates
Bristol
United Kingdom



EXHIBITION CENTRES



Eden Project
Nicholas Grimshaw &
Partners
United Kingdom



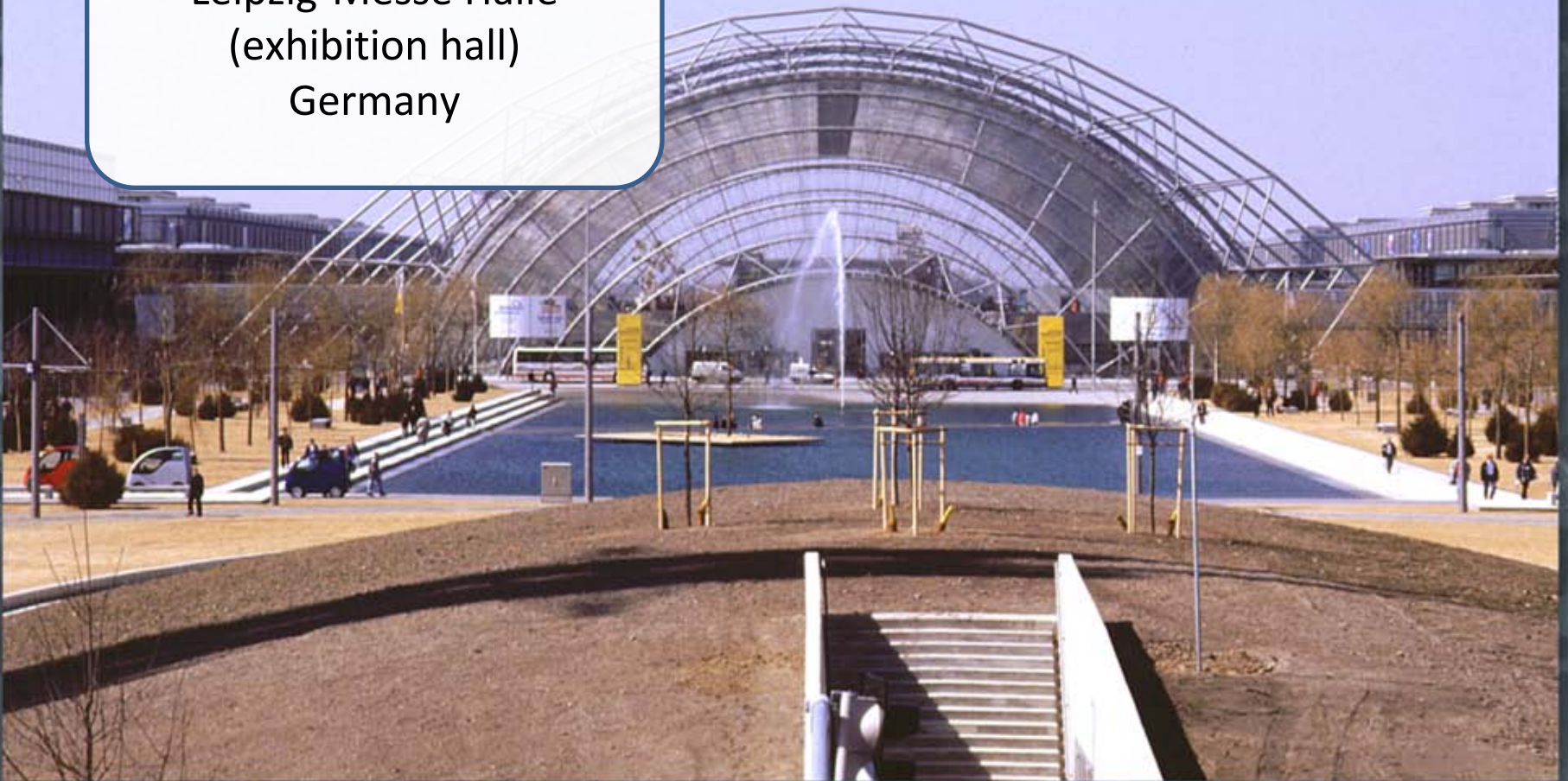
Congresso Brasileiro de Galvanização

GALVA BRASIL
2011

REALIZAÇÃO



Leipzig-Messe Halle
(exhibition hall)
Germany





OUTDOOR SCULPTURES

The Crouching Man /
'Exposure'
The Netherlands







Congresso Brasileiro de Galvanização

GALVA BRASIL
2011

REALIZAÇÃO





The Singing Ringing Tree,
Crown Point, Burnley



PUBLIC BUILDINGS

Glucksman Gallery
O'Donnell & Tuomey Lewis







SPORTS AND LEISURE



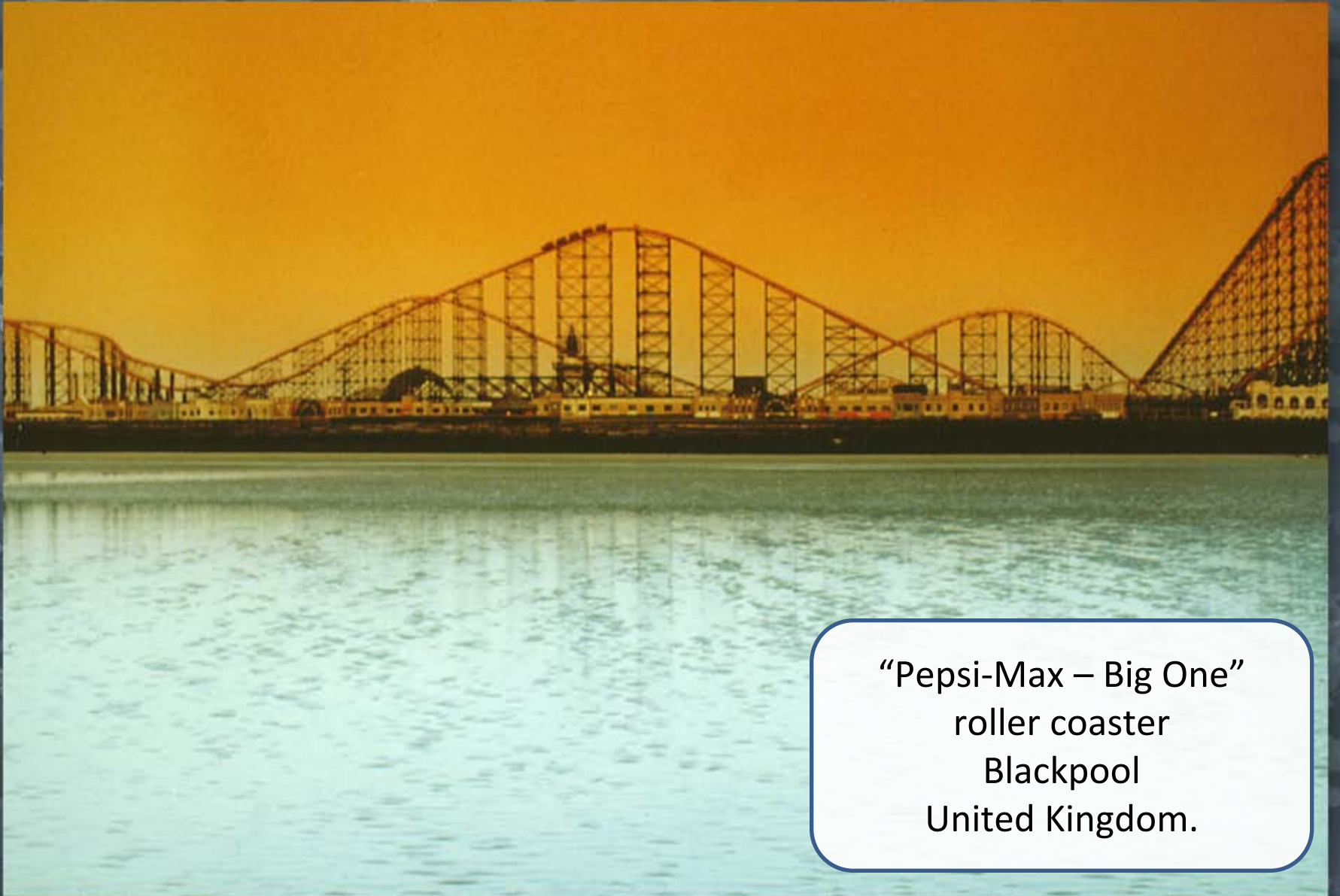
Glasgow Celtic FC
Scotland





Small Sports 'Changing
Room'
London
United Kingdom





“Pepsi-Max – Big One”
roller coaster
Blackpool
United Kingdom.



Galzigbahn
St Anton am Arlberg
Austria







Cittadella del Vino,
Mezzocorona
Italy



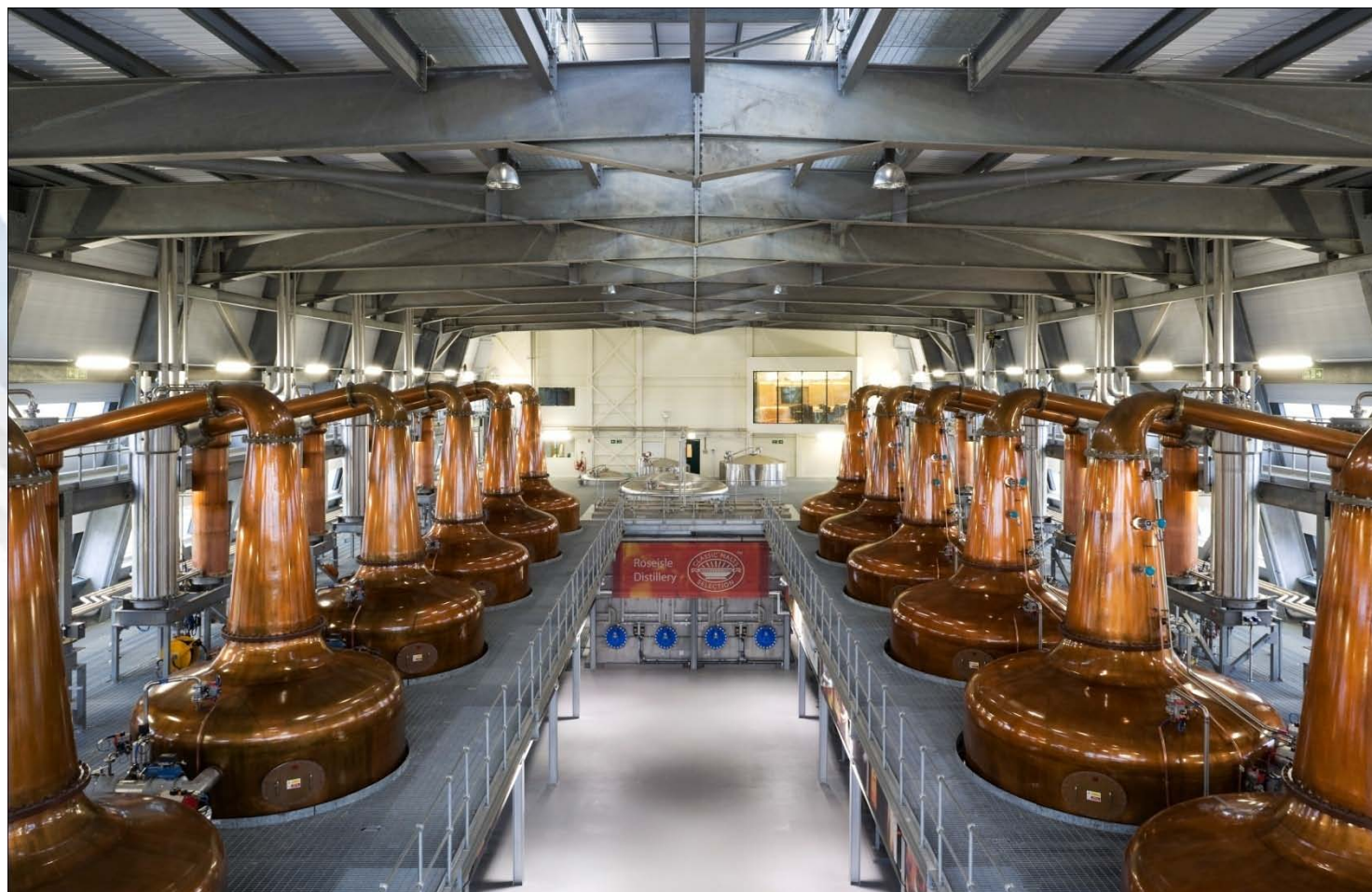






Roseisle Distillery
RIM Fabrications
Scotland







TRANSPORT INFRASTRUCTURE



NMBS Train Station
Canopy, Leuven
Belgium



Congresso Brasileiro de Galvanização

GALVA BRASIL
2011

REALIZAÇÃO

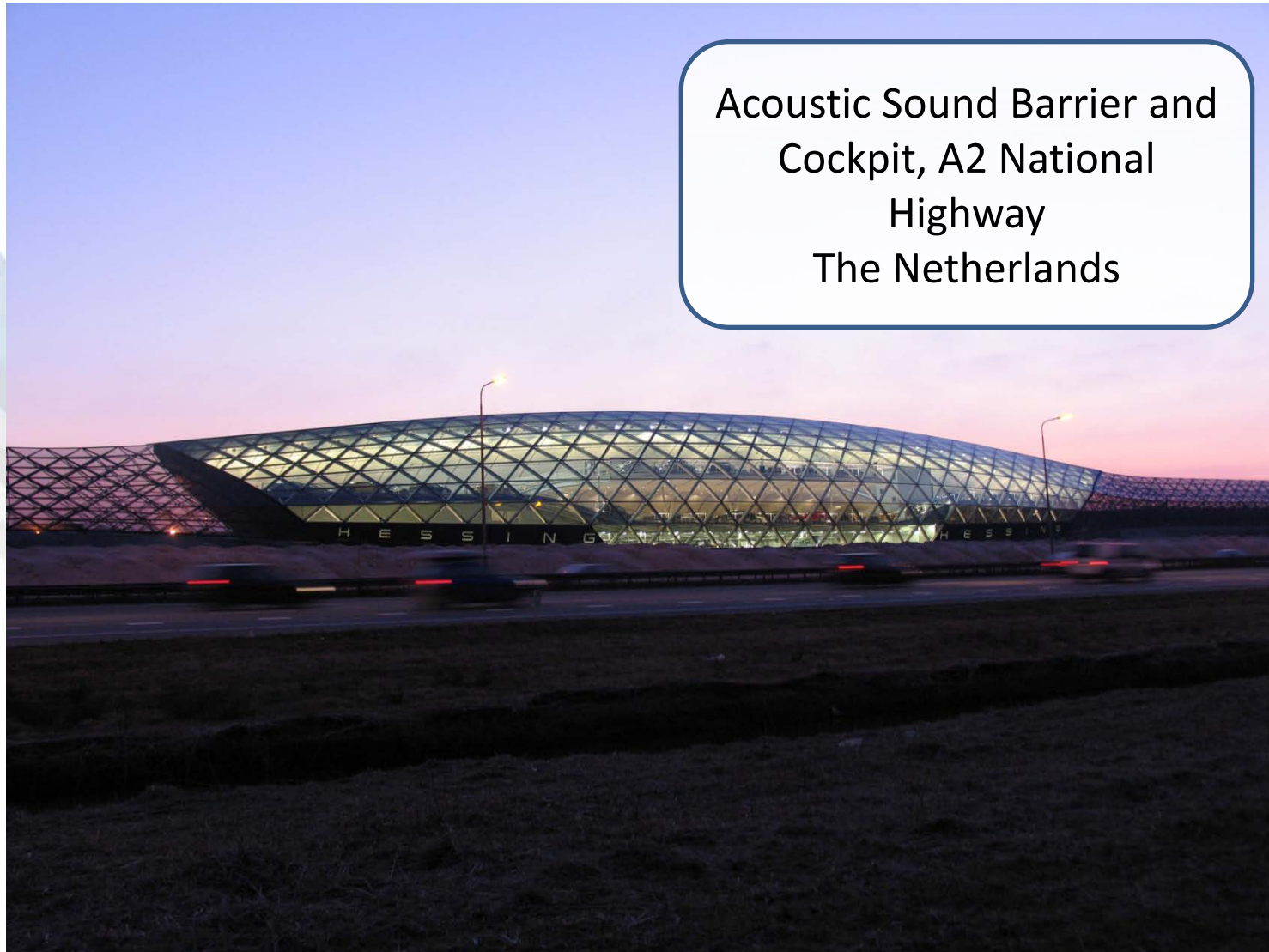


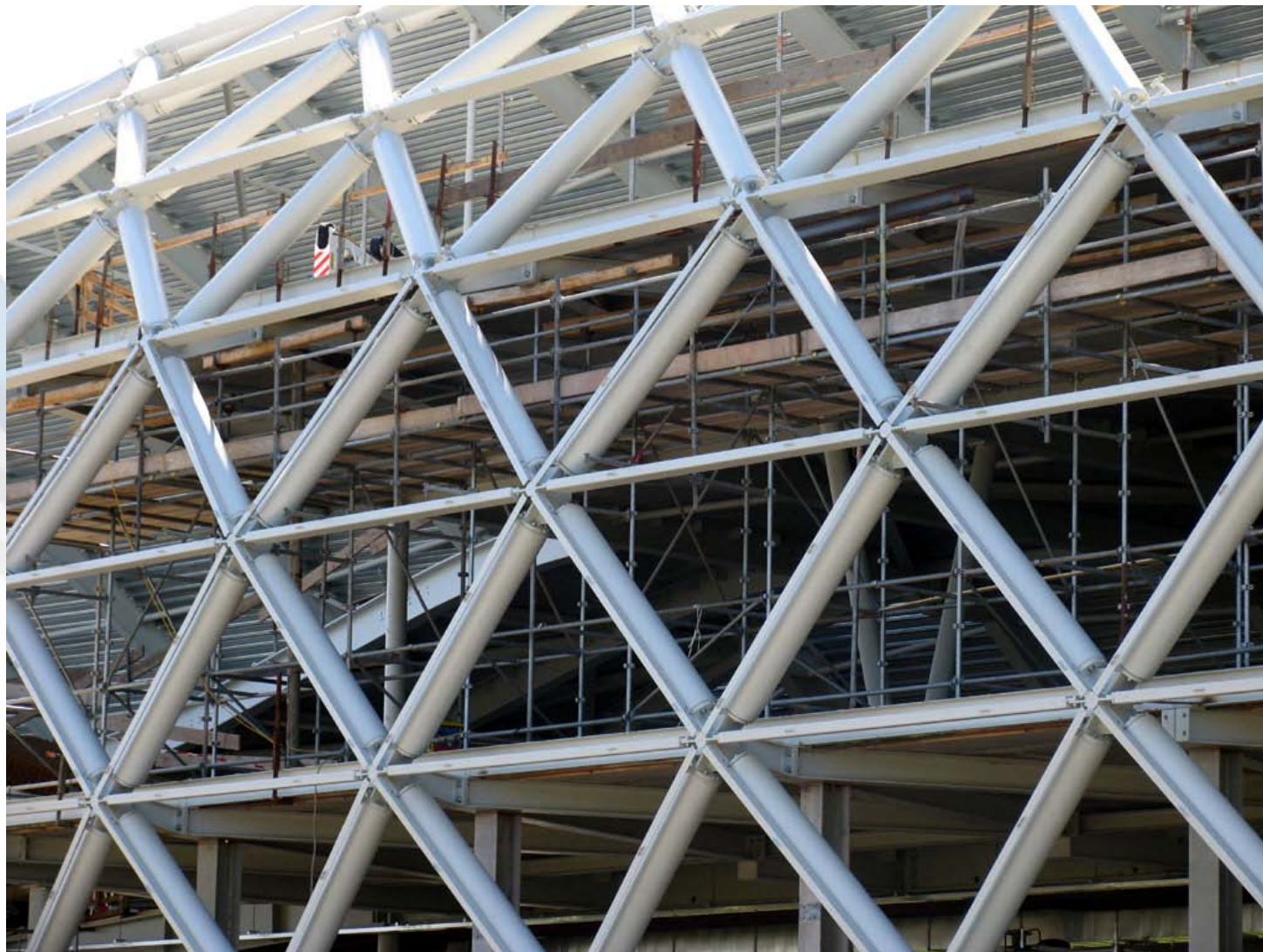


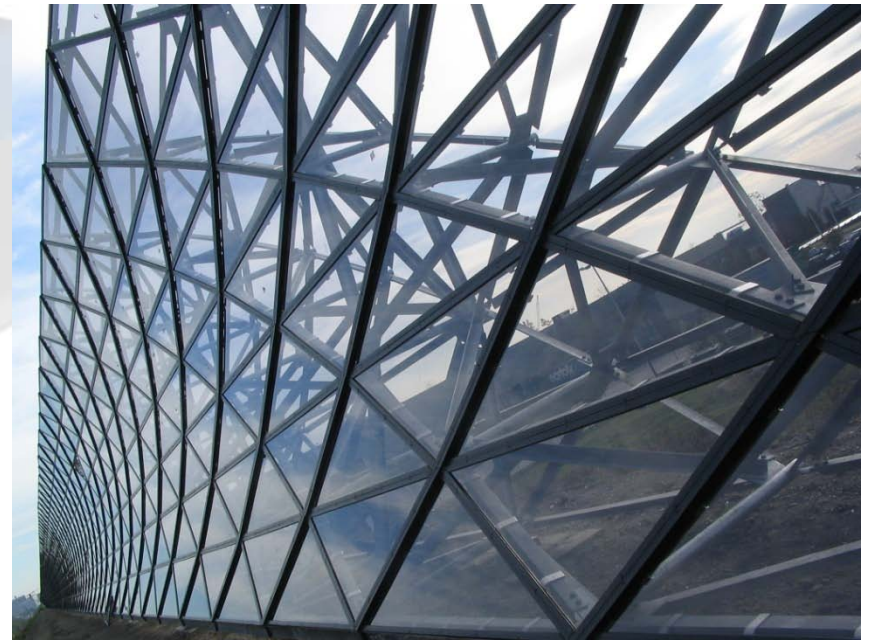
Gare D'Orléans, Orléans
France



Acoustic Sound Barrier and
Cockpit, A2 National
Highway
The Netherlands









INTERGALVA 2012 Paris

10-15 June 2012

A photograph of a museum gallery. In the foreground, a modern staircase with a glass railing and metal handrails descends from the right. In the background, a bust of a woman with a dark, rounded headpiece is displayed on a pedestal. The walls are light-colored, and there are other artworks visible in the distance. The lighting is warm and focused on the bust.

Thank you!